

**COMMUNITY
PARTNERS**
OF SOUTH FLORIDA
HEALTH | HOUSING | COMMUNITY

IMPACT REPORT

2022-2023



OUR MISSION

Our mission is to partner with communities to change the odds for children and families facing social, emotional, and financial adversity.

OUR VISION

Community Partners of South Florida is the trusted leader in comprehensive community development – investing in people, places, and systems so neighborhoods and residents thrive.

Letter from the CEO

Dear Friends and Supporters,

As I reflect on my first year as CEO, having served Community Partners of South Florida for 15 years, I am deeply moved by the resilience, dedication, and transformative spirit that defines our work.

Our mission - **to change the odds for children and families facing adversity** - has never been more vital or urgent. This past year has been one of significant change, both within our leadership and in the world around us. Yet, through every challenge, our organization has emerged stronger, more united, and more committed to creating a lasting impact.

Leading an organization that operates 27 client-facing programs across mental and behavioral health, housing, and community needs is no small feat. Our services touch lives at critical moments, and I am incredibly proud of how we have adapted to meet the evolving needs of those we serve. Despite a year of transition, particularly within our officer team, we have remained focused on our mission while navigating the complexities of growth and change.

One of the hallmarks of transformational leadership is the ability to see opportunity where others see obstacles. Over the past year, we have embraced new approaches, fostered innovation, and strengthened our commitment to operational excellence. Our organization is growing in ways that not only support the children and families we serve but also our dedicated staff, whose passion and expertise are the driving force behind everything we do.

As we move forward, I am excited by the path ahead. We are not only expanding our services but also deepening our impact in the community.

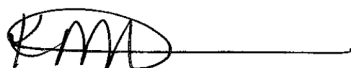
By empowering our employees, fostering collaboration, and remaining agile in a changing landscape, we are ensuring that our mission thrives for years to come.

To our board, partners, staff, and community members—THANK YOU.

Your support fuels our vision and makes it possible for us to continue changing lives.

Together, we are transforming challenges into opportunities and creating a brighter future for the families and children who need us most.

With gratitude,



Kelly Powell

Chief Executive Officer

"By empowering our employees, fostering collaboration, and remaining agile in a changing landscape, we are ensuring that our mission thrives for years to come."

A JOURNEY TO HOMEOWNERSHIP

The journey of a thousand miles starts with a single step and to make that journey requires perseverance. No-one understands this more than Chenet Louis-Jean, his wife Carme and their six children.

The Chenet-Louis' journey started in almost a different time - the pre-pandemic era of 2019 when they first came to Community Partners of South Florida through the financial capability services of the Prosperity Center.

The next few years required patience, diligence and determination to become mortgage-ready but the family prevailed, working closely with Odessa Walker and Homebuyer Education Services, moving closer and closer to their dream of owning a home.

Community Partners of South Florida collaborated with Palm Beach County and the City of West Palm Beach which enabled the family to access payment assistance and grant support which included funds from Palm Beach County's State Housing Initiatives Partnership (SHIP) Purchase Assistance Program, the matched savings program through the West Palm Beach Homebuyers Club and grants from both Community Partners of South Florida and Regions Bank.

Five long years later, the Chenet-Louis family came home for the holidays - literally.

In December 2024, Community Partners of South Florida stood alongside the family as they closed on their first home and even hosted a ribbon cutting ceremony for them.

The story of Chenet Louis-Jean, his wife, and their 6 children is one of perseverance. The Louis-Jean family's journey toward homeownership began in 2019 when they first connected with our Financial Capability services through the Prosperity Center. Over the next few years, worked hard to become mortgage-ready, and with the guidance of CPSFL's Homebuyer Education services, they steadily moved closer to their dream.

Through years of attending our programs, learning financial literacy and the steps to property ownership, they made strides towards their dream, and by 2024, they made that dream a reality. Thanks to the collaboration between CPSFL, Palm Beach County, and the City of West Palm Beach, they were able to access down payment assistance and grant support, including funds from the PBC SHIP grant, matching savings as Homebuyers Club participants, and grants from CPSFL and Regions Bank.

In December 2024, we celebrated the occasion together with a ribbon-cutting ceremony. Watching them close on their home was a proud moment, not just for the family, but for everyone involved in making their dream come true.

Five long years later, the Chenet-Louis family came home for the holidays - literally.





Housing Fair Highlights

Our Annual Housing Fair that took place at the Riviera Beach Marina on Saturday, June 15, 2024 was greatly successful. It was not only a testament to the importance of homeownership, which is a vital step toward financial stability and personal growth, but also served to showcase the wide range of services we provide as well as the many partners who support our work.

- 120+ families in attendance
- More than 50% of attendees became CPSFL clients
- Raised over \$24,400 at the Housing Fair
- 10 financial partners in attendance

A Young Student's Journey to Emotional Growth

One of our younger clients, a kindergarten student, was referred to our school district co-located therapist after showing signs of struggling with emotional regulation, impulse control, and defiance. His frustration often led to running out of the classroom and disruptive behavior when things didn't go his way.

Together with the school counselors, teachers, and his parent, we developed a support plan to help him learn coping, communication, and listening skills.

Recently, he became involved in creating his own behavior plan, choosing his rewards and proudly earning Spider-Man stickers for meeting his goals. These days, his teacher no longer calls for assistance, and the student now looks forward to succeeding with his plan. Each week, he excitedly shares his progress with us during sessions, and his mother has noticed significant improvements at home—he's calmer, less frustrated, and able to handle challenges with more patience. His journey is a beautiful reminder of how, with the right combination of family, community, and professional support, even the youngest members of our community can overcome emotional turmoil and learn to thrive.

A Season of Giving

The holidays are a time of love, generosity and cheer but they can also be a difficult time of the year where the stress of the season can amplify both mental health and financial struggles.

At Community Partners of South Florida, we recognize the duality of the season and are dedicated to serving our community with our Season of Giving campaign in which we connect with our friends, partners and neighbors to express gratitude and spread hope and holiday cheer.

From hosting a Friendsgiving Dinner where friends and supporters get a chance to break bread with the residents of our supportive housing community to a holiday toy drive where we collect hundreds of toys for children across our programs, Community Partners of South Florida's Season of Giving is a chance to infuse our mission of changing the odds for children and families facing social, emotional, and financial adversity with a little holiday magic.

We would like to thank our supporters who give so generously every year. If you would like to join our mission as we work together to Change The Odds, not just at the holidays but all year long, please reach out to info@cpsfl.org.



CORE VALUES

1 Excellence:

When each and every employee can see the flow of value to our customer and improve that flow at every step, we are achieving excellence.

2 Adaptive Enterprise:

We are a learning organization. We embrace, change, and respond effectively and constantly to the environment.

3 Relationships That Promote Trust, Love, and Human Dignity

It is in and through our connection to one another that positive change occurs for those we serve.

4 Fair Access, Opportunity, and Responsibility:

We believe in promoting a level playing field where individuals take responsibility and seize opportunities.

LONG-TERM OUTCOMES



1 RESILIENCE

Children living in environments with significant risks are engaged and ready to learn.



2 STABILITY

Children and families living in environments with significant risks demonstrate improved social-emotional well-being and stability.



3 EMPOWERMENT

Low income families build and sustain financial assets and/or housing of choice.



LONG-TERM GOAL 1:

Children living in environments with significant risks are engaged and ready to learn.

Children in high-risk environments face barriers that can impede their academic success, safety, and overall development. At CPSFL, we focus on creating conditions that prepare children for learning, despite the challenges they face.

By providing access to education, support services, and resources to both children and parents, Community Partners of South Florida helps ensure that children are not only safe and ready to learn but are also set up for lifelong success.

The following statistics highlight our impact in the 2022 – 2023 fiscal year and showcase our efforts to engage and empower our communities' children.

Our Mentoring program and Teen Outreach Program (TOP) reported a combined **86% improvement** in attitudes and behaviors of participating youth.

Through Safe Kids PBC, we have distributed **over 1,000** child safety seats to parents in need.

We facilitated **14,000+** volunteer hours in youth programming by community parents, youth and residents.

COMMUNITY SERVICES



INTRODUCTION

Strong communities are built on the foundation of connection, opportunity, and shared support.



Kenyon Link, VP of Community Services

Community Partners of South Florida’s Community Services are designed to strengthen neighborhoods and empower residents by fostering collaboration and providing resources that address the unique needs of each community.

From economic empowerment initiatives to neighborhood revitalization efforts, our programs ensure that individuals have access to the tools and opportunities needed to succeed.

Together, we are building vibrant communities where everyone has the chance to grow, contribute and thrive.

Meet the VP:

The Community Service area within Community Partners of South Florida encompasses seven dedicated programs, operating with a budget of nearly \$8 million. Each

program is deeply integrated into the communities we serve, employing staff members who reflect and relate to the diverse populations in our areas.

As Maya Angelou wisely said, “People will forget what you said, people will forget what you did, but they will never forget how you made them feel.” This sentiment is at the heart of our service area mission. Our ultimate goal is to make a meaningful impact in the lives of those we touch, leaving clients in a better state than when we first met them.

We embrace an “Inside Out” mindset, encouraging our staff to create positive experiences that empower clients to share their knowledge with others. By fostering a culture of mutual teaching—“Each One Teach One”—we believe our communities will thrive and grow together.

PROGRAMS

BRIDGES:

- BRIDGES at Riviera Beach
- BRIDGES at Highland in Lake Worth
- BRIDGES at Lake Worth
- BRIDGES at Belle Glade
- BRIDGES at Pahokee

Mentoring

- Highland (Elementary) in Lake Worth
- Highland Lake Worth Middle School
- Pioneer Park (Elementary) in Belle Glade
- Pahokee (Elementary)

TOP – Teen Outreach Program

Triple P – Positive Parenting Program

- Teen Triple P

Safe Kids PBC Program

Riviera Beach Health Initiative

DIP – Digital Inclusion Program

**STAFF
HIGHLIGHT**



Tina McNutt, Department Director-Community Services

Department Director Tina McNutt was featured in an article in Parents Magazine about how parents can inspire their daughters to pursue a career in STEM (Science, Technology, Engineering, Mathematics).

Below is an excerpt from the article featuring Tina's contribution:

Your daughter's first exposure to STEM begins at home, and early, says Tina McNutt, program director with Mentees on the Move, a STEM mentoring program at Community Partners of South Florida. She suggests creating opportunities early to foster a STEM mindset.

"Just like we hand a baby doll to our young girls, we can have opportunities for them in STEM—building things, creating, and problem-solving," she says. "Do hands-on activities that help girls build confidence, create ideas, and build problem-solving skills."

**SCAN QR CODE
TO READ MORE**



Tina has been with CPSFL for over 20 years and is currently the director of the Teen Outreach Program, Mentoring at Highland and Mentoring at Pioneer Park. We're proud to have such talented staff like Tina dedicated to helping young people in our community find their passion and change the odds no matter what adversity they and their families face.





LONG-TERM GOAL 2:

Children and families living in environments with significant risk demonstrate improved social emotional well-being and stability.

The emotional and social stability of children and families plays a critical role in their ability to thrive, particularly in high-risk environments.

Community Partners of South Florida offers comprehensive mental health and support services designed to strengthen family bonds, enhance emotional resilience and improve overall well-being.

By helping families build coping mechanisms and fostering a sense of stability, we're creating a healthier foundation for future generations.

Here are just some statistics that underscore the progress we're making in improving social-emotional outcomes for at-risk families in the 2022 – 2023 fiscal year.

Our BRIDGES program achieved a **77.6%** participation rate for Parent Capacity-Building workshops.

All therapy services combined not only met our target successful discharges, but exceeded them by an additional **5%**.

Our Positive Parenting Program (Triple P) achieved a **91%** successful completion rate.

CHILD AND FAMILY MENTAL HEALTH SERVICES



INTRODUCTION

Mental health is central to the well-being of children and families and CPSFL is committed to providing comprehensive support that addresses both emotional and social needs.

Through our Child and Family Mental Health programs, we offer a range of services, including therapy, case management and early intervention.

These programs empower families to navigate the challenges of life with resilience and hope. By fostering healthy mental and emotional development, we are changing the odds for children facing adversity and helping families to thrive, one step at a time.



Kaisha A. Thomas, Ph.D, LMFT, LMHC

“Child and Family Mental Health services at Community Partners of South Florida are vital to the well-being of our community. These services provide crucial support for children and families facing emotional, behavioral, and mental health challenges. By offering tailored counseling, therapy, and resources, CPSFL helps strengthen family bonds, improved communication, and equips children and families with the tools they need to thrive. The benefits are far-reaching, from enhancing children's academic and social success to fostering healthier, more resilient families, and improving overall quality of life. CPSFL is committed to providing these life-changing services, ensuring a brighter future for all.”

PROGRAMS

- Therapy Services

Individual & Family Therapy Services

Safe Schools (Partner Schools Listed Below)

- Allamanda Elementary School
- Benoist Farms Elementary School
- Boca Raton Elementary School
- Clifford O. Taylor/Kirklane Elementary School
- Congress Middle School
- Forest Hill Elementary School
- Heritage Elementary School
- Independence Middle School
- Indian Pines Elementary School
- Melaleuca Elementary School
- Okeeheelee Middle School
- Palm Beach Gardens Elementary School
- Palm Beach Lakes High School
- Rolling Green Elementary School
- Seminole Ridge High School

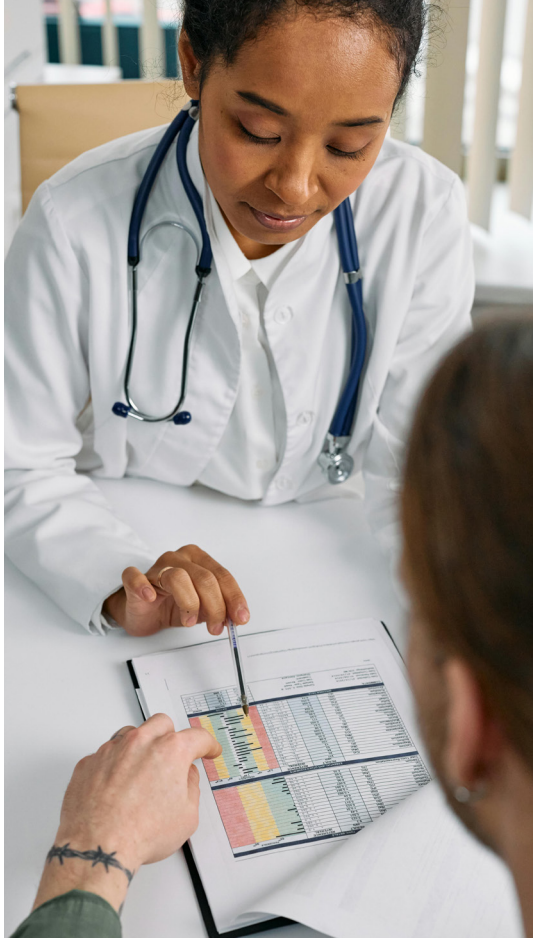
- Wraparound Services: Case Management Services for Adults & Children

- Psychiatry: Adults & Children

CFMHS PROGRAM HIGHLIGHT- PSYCHIATRY:

CPSFL provides psychiatric services including evaluations, diagnoses, and medication management of mental health conditions. This program serves children, adolescents and adults over the age of four.

Children with mental health conditions who exhibit behavioral health concerns and other issues highly benefit from our psychiatric services. Our experts can assess the issue, develop a treatment plan, and help guide affected children and their families to a healthy thriving life.



Rebuilding a Life and a Family

It was a challenge unlike anything Michael had ever faced before. Standing in the courtroom that day, he saw his life crumble - he had lost custody of his child due to a domestic dispute, his relationship with the mother of his child was fractured, he was now on probation and had to submit to mandatory drug testing as well as participate in court-ordered community service.

It had all gone so wrong...but Michael was determined to set things right again.

He arrived at Community Partners of South Florida with an unquenchable desire to do right by his family and rebuild his life.

He invested himself into the therapeutic process and worked tirelessly to mend his relationships with his family and regain custody of his child. He reassessed the other relationships in his life and removed the negative influences.

Once successfully discharged from the program, Michael was happy to keep in contact with us and recently, he called us with great news - his case had been dismissed.

Michael had a fresh start and was filled with gratitude for the resources and support he had gotten at Community Partners of South Florida.

He is determined to continue on the right path, growing as both a father and as a man and taking back control of his life, one step at a time.



LONG-TERM GOAL 3:

Low-income families build and sustain financial assets and/or housing of choice.

Financial stability and housing security are crucial to helping families break the cycle of poverty. CPSFL's financial coaching, housing support, and homeownership programs empower low-income families to achieve financial independence and sustain housing of their choice. Our efforts to support these families have produced significant results as shown in the following key statistics that reflect the growth and stability achieved through our programs in the 2022 – 2023 fiscal year.

We have increased homeownership competence in **95%** of clients in our homeownership program.

Our Prosperity Center program has helped approximately **56%** more clients than our target goal.

Our Supportive Housing program successfully placed 85 clients in stable housing and provided roughly **24%** more clients per month on average than originally projected.

HOUSING



INTRODUCTION

Our Housing Services team has housing and financial specialists working tirelessly to help the people in our communities secure safe, affordable and sustainable housing.

By investing in both immediate housing needs and long-term stability, we empower our community to break free from the patterns of adversity holding them back from building a better future together.



Top: Cory Campbell; Property Manager, Tera Rose; Senior Program Coordinator, Mira Zhivkova; Chief Operating Officer, Brittany Hightower; Housing Intake Coordinator, Odessa Brown, Homeownership Program Manager

Bottom: Carlos Hernandez; Housing Services Operations Manager, Natalie O'Hara; Chief Financial Officer, Lynda Charles; VP of Housing Services, Kelly Powell; Chief Executive Officer, Ludie Celucien; Outreach and Homebuyers Club Coordinator

HOUSING PROGRAMS

Homeownership Promotion, Preservation

- Pre & Post Purchase counseling
- Foreclosure Prevention and Mitigation
- Access to Down Payment Assistance (Palm Beach County)

Lending

- Residential mortgage origination services and closing
- Correspondent Lending and Brokerage Services
- Access to Down Payment Assistance (Palm Beach and Broward County)

Financial Empowerment Services

- Financial Literacy and Coaching
- Workforce Mobility & Asset Building (Matched Savings Program)
- Rental Counseling

Rental Housing Services

- Permanent Supportive Housing
- Transitional Housing
- Affordable Rental Housing for low-to-moderate income households

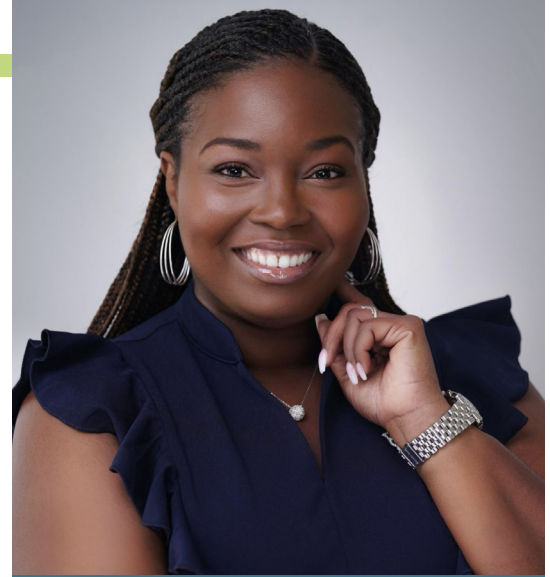
Residential Development and Production

- Acquisition/Rehabilitation/Resale
- Single Family development
- Multi Family Rental development



PROGRAM HIGHLIGHT- PROSPERITY CENTER:

Prosperity Center includes financial capabilities, SOFI (securing our future initiative), Volunteer Income Tax Preparation (VITA) and rental counseling. These programs are capacity building programs that aim to build individual self-sufficiency and sustainability. CPSFL serves approximately 1,000 individuals within these programs annually.



Odessa Brown ,
Housing Program Manager

“My role is to facilitate the home buying process by providing counseling services to individuals seeking homeownership. I also assist with post-homeownership services such as foreclosure prevention.

I educate potential buyers in Homebuyer Education Classes about the home buying process, help with getting applicants mortgage ready, refer them to lenders and work with them to find available down payment assistance programs.

In over two decades with CPSFL, I have educated many households regarding homeownership and I have closed hundreds of loans

Additionally, I have counseled individuals regarding foreclosure prevention, providing application support for rehabilitation grants and helped families access funds so they can remain in their homes.

The outcome is stability.

Affordable housing by way of homeownership helps families to create generational wealth and make healthy financial decisions.

Stable housing helps people thrive.”

AMPLIFYING IMPACT: DRIVING REVENUE AND COMMUNITY GROWTH

Amplifying Impact, a social enterprise of Community Partners of South Florida (CPSFL), is dedicated to boosting the organization's revenue while fostering community development. By offering a customizable suite of services, Amplifying Impact collaborates with local, state, and national organizations on various initiatives. These include project management, comprehensive community development support, community engagement training, consultation and facilitation, and the coordination of conferences and convenings.

Since its inception, Amplifying Impact has successfully secured an additional \$700,000 in resources for CPSFL. This achievement is a testament to the enterprise's effectiveness and the strength of its partnerships with national, state, and local organizations.

CPSFL remains committed to diversifying its revenue streams while delivering essential capacity-building and community engagement solutions. Through Amplifying Impact, we enhance the capabilities of our partner agencies at local, state, and national levels, ensuring a broader and more profound impact.

Resident Leadership Academy (RLA) Success Story Story by LaToya Henry

Becoming a community leader has been an immense privilege, filling me with deep gratitude for the transformative opportunities it has presented to not only serve others but also to experience personal growth on a profound level. This role has allowed me to directly contribute to the well-being of my community, providing a platform to learn, advocate, and inspire positive change. Inspiring me to become a member on committee broad and experience opportunities that I never thought I would have.



LaToya Henry

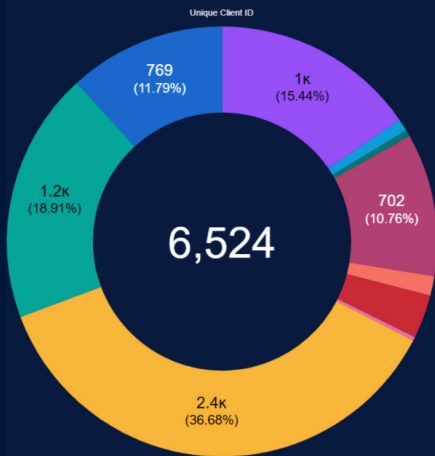
Becoming a community leader through the RLA has been an immense privilege. I am filled with overwhelming gratitude for the transformative opportunities this program has provided me. The ability to serve others and experience personal growth on a profound level has allowed me to directly contribute to my community's well-being, and provide a platform to learn, advocate, and inspire positive change.

This 10-week program required my full commitment. In my first two weeks, I gained a great appreciation for the opportunities this program provided for people like myself who grew up in underprivileged communities.

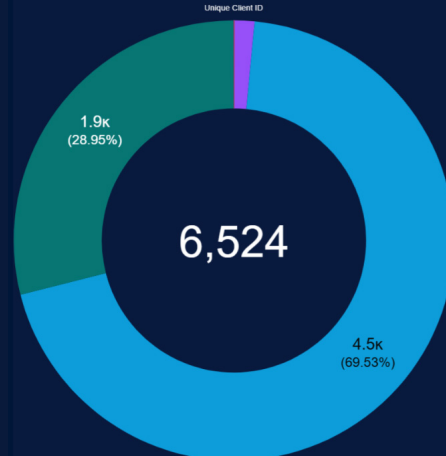
I completed my last class while 9 months pregnant, in my hospital bed, with my baby girl.

It was so inspiring for me to become a member of this committee and experience opportunities that I never thought I would have.

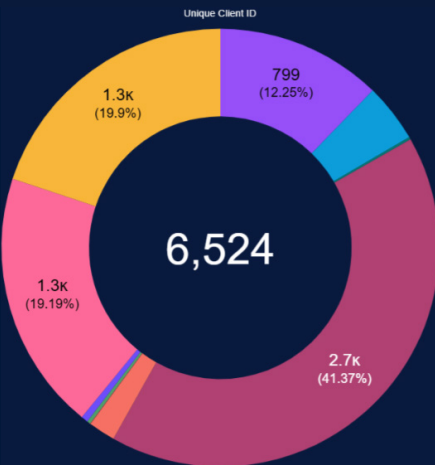
WHO WE SERVE (6,524 Clients Served)



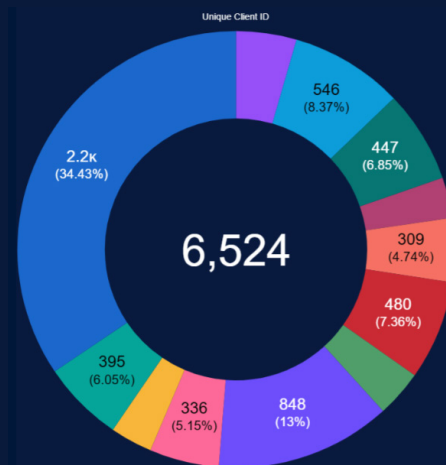
Ethnicity



Gender

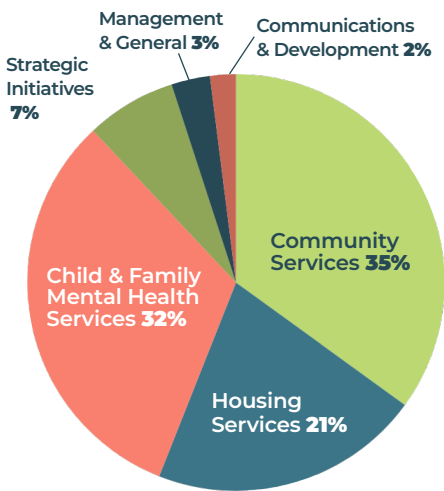


Race

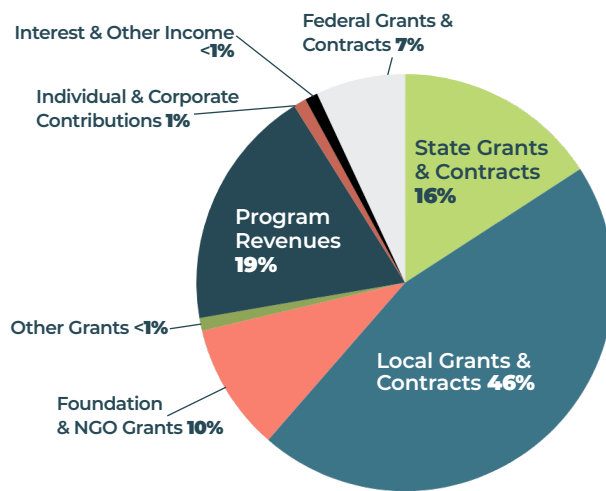


Zip Code

FINANCIALS



Program Expenses



Revenue Sources

Contributions benefit the Parent-Child Center, Inc., d/b/a Community Partners, a not for profit tax exempt organization. A COPY OF THE OFFICIAL REGISTRATION AND FINANCIAL INFORMATION OF THE PARENT-CHILD CENTER, INC., CH3096, MAY BE OBTAINED FROM THE DIVISION OF CONSUMER SERVICES BY CALLING TOLL FREE 1-800-435-7352 WITHIN THE STATE OF FLORIDA. REGISTRATION DOES NOT IMPLY ENDORSEMENT, APPROVAL OR RECOMMENDATION BY THE STATE. The Parent-Child Center, Inc. receives 100% of each contribution. Contributions benefit the Housing Partnership, Inc., d/b/a Community Partners, a not for profit tax exempt organization. A COPY OF THE OFFICIAL REGISTRATION AND FINANCIAL INFORMATION OF THE HOUSING PARTNERSHIP, INC., CH8174, MAY BE OBTAINED FROM THE DIVISION OF CONSUMER SERVICES BY CALLING TOLL FREE 1-800-435-7352 WITHIN THE STATE OF FLORIDA. REGISTRATION DOES NOT IMPLY ENDORSEMENT, APPROVAL OR RECOMMENDATION BY THE STATE. The Housing Partnership, Inc. receives 100% of each contribution.

SUCCESS STORIES

IMPACT STORIES



INTRODUCTION

While Community Partners of South Florida helps thousands of people every year, our numbers only tell part of our story.

Behind every statistic is a family, child, or individual whose life has been transformed through our programs.

The following stories will show firsthand how our services make a lasting impact on Palm Beach County families - bringing hope and stability to those facing adversity.

These stories reflect the heart of our mission and the difference we are making, one life at a time.

Finding Healing and Building a Safe Home (Child and Family Mental Health Services)

When Elizabeth (not her real name) was referred to our mental health services following a DUI arrest, she was apprehensive about starting therapy.

However, over the course of six months, her commitment to the process transformed her life.

Through sessions with her CPSFL therapist, Elizabeth processed past trauma and worked on developing coping skills to manage her anxiety. The sessions that included her girlfriend were especially meaningful, as they worked together on building trust, improving communication and learning to compromise. In addition to strengthening their relationship, these joint therapy sessions also brought a sense of harmony and peace into their home.

With the guidance of therapy, Elizabeth has also found the strength to set boundaries with family members, something she had never been able to do before. This helped to ensure her own safety and create a healthy home environment for herself. Her journey is a testament to the power of healing and the impact of supportive relationships.





A Mother's Dream of Homeownership Comes True (Housing)

Marianne, a dedicated Veterans Administration employee and mother, came to us with the dream of providing stable housing for her daughter. She had been living with her family, but with her SHIP (State Housing Initiatives Partnership) grant letter dangerously close to expiring, she was feeling anxious about finding a home in time.

In January 2024, we connected her with City National Bank where she was able to secure a loan approval with greater purchasing power, thanks to a low 4.5% interest rate.

With our guidance, she also applied for a Riviera Beach grant and found a beautiful two-bedroom home in a gated community. By April 2024, Marianne had closed on her home. She and her daughter are now enjoying the comfort and stability she worked so hard to achieve. Marianne's story showcases the power of determination, community support and the joy of writing a new chapter in a home she can proudly call her own.

Empowering a Young Father with Support and Knowledge (Community Services)

We received a call from a young father.

Recently turned 18 and overwhelmed with stress, Mark (not his real name) was concerned for his baby's safety.

Baby Danny (not his real name) was diagnosed with asthma and the only car seat the family had access to was borrowed from a smoker's house.

The seat reeked of cigarette smoke which aggravated Baby Danny's condition, making it even harder for him to breathe.

He called Community Partners of South Florida panicked and urgent and we assured him that we would help.

When Mark arrived at the CPSFL main campus in Riviera Beach, our certified Safe Kids PBC technicians not only provided the family with a brand new, clean car seat but they walked him through every detail of how to install and properly harness Baby Danny.



Watching his confidence grow as we explained these vital safety tips was truly rewarding. He expressed his relief and gratitude, saying he had no idea how much went into keeping his baby safe in the car.

We also shared other important tips, like safe sleep practices and never leaving the baby in a car unattended. By the end, Mark was equipped with a new car seat and the knowledge to protect his child's health and safety.

Mark even followed our Facebook page so he could continue to learn more about caring for his child from our monthly safety series. He now has the confidence and the resources he needs to keep his baby safe.

Letter from the Board Chair



Charlotte Pelton

Board Chair
Community Partners
of South Florida

Dear Supporters and Friends,

This year has been a remarkable chapter in the journey of Community Partners of South Florida. As we reflect on our progress and look forward to the future, we are reminded of the strength and resilience within our organization. Under the leadership of our CEO, Kelly, who has dedicated 15 years to this mission and now one pivotal year as CEO, we have experienced profound growth and adaptation during a time of significant change.

Our mission to change the odds for children and families facing adversity is more than a statement—it is the heartbeat of every decision we make and every program we deliver. Across 27 client-focused programs in mental and behavioral health, housing, and community needs, we are not only meeting but exceeding the expectations of our community. Even amid changes in our officer team and broader organizational shifts, our commitment has remained strong, thanks to the dedicated individuals who give their all to this cause.

Transformational leadership is at the core of our achievements this year. With a clear vision and a collaborative spirit, we are strengthening our organization to be more agile, resilient, and impactful than ever before. This transformation extends beyond leadership; it touches every member of our staff, every program we run, and every life we impact. Kelly's leadership has inspired us to move beyond limitations, embrace innovation, and adapt with purpose and compassion.

On behalf of the Board, I want to express our deepest gratitude to our staff, partners, and community members whose support makes our mission possible. Together, we are building a future where every child and family has the opportunity to thrive, no matter the challenges they face. We are proud to walk this journey with you and look forward to the positive change we will create together in the coming year.

With appreciation,

Board Chair, Community Partners of South Florida

THANK YOU TO OUR GENEROUS DONORS

INVESTMENT PARTNERS

Children Services Council of Palm Beach County
South East Florida Behavioral Health Network
NeighborWorks America - NWA Expendable
Palm Beach County Board of County Commissioners
Palm Beach County School District
Palm Health Foundation
United Way Of Palm Beach County
Wealth Watchers - Foreclosure Mitigation
City of West Palm Beach
Lost Tree Village Foundation
Florida Blue Foundation
Jim Moran Foundation
Quantum Foundation
JP Morgan Chase Foundation
US Dept of HUD
Community Foundation for Palm Beach & Martin Counties
PNC Foundation
St. Mark Episcopal Church
Bank of America

IBM Corporation
USDN - Urban Sustainability Directors Network
US Dept of Health and Human Services
Riviera Beach Community Development Corp
Nextera Energy Foundation, Inc.
Bank United
Wells Fargo Foundation
First Horizon Bank/Iberia/Sabadel
TD Charitable Foundation
Lake Worth CRA
Kiwanis Clubs
The Partnership, Inc.
City National Bank of Florida
JP Morgan Chase & Co
Regions Bank
ConsumerAction
ChildNet
Citi Group Foundation
Valley Bank
Florida Community Loan Fund

ANNUAL DONORS

Abnet Nerelus	Anne Paskavitch	Catheryn Espino
Adam Kramser	Annette Etienne	Cayla Akien
Adassa Seville Muirhead	Anthony Gregory	Charity Lewis
Adrenne Schoenwalder	Antoinita Ifill	Charles Rollo
Adrian Bedford	April Berube	Charlotte Gill
Adrianiq Pryce	April Stephany	Charlotte Pelton
Agatha Smith	Arselaine Augustin	Charlyn Lowery
Al Robinson	Artiona Hickman	Chelsea & Michael Reed
Albert Toon	Ashley Cobb	Chenet Louis-Jean
Alexandra Valencia	Ashley Wilkerson	Cheryl Lerro
Alica Brown	Audrey Ades	Christina Gustavson
Alicia Bowens	Barbara Buckley	Clarice Redding Louis
Allison LaBossiere	Barbara Cheives	Clarissa Williams
Allison Mouzer	Barbara Dorta	Claudia Bleus
Altigrace Saint Surin	Bella & Gianna Picard	Colin Walkes
Ana Lopez	Bergeline Jeanfrancois	Corey Savage
Angela Ice	Bianca DeLoach	Coriyati Campbell
Angela Lykins	Bill & Bridget Ramsey	Cornesha Dukes-Chisholm
Angela Rose	Bill & Mary Creslein	Cory Lewis
Anish Kabir	Blair Lee	Craig Glover
Anita Flores	Blanca Perez	Billy & Cristina Hungerford
Anita Winkis	Brenda Coleman	Cylenithia Mann
Anndra Chintala	Carine Emile	Cynthia Mcmillan
Anne Harring	Catherine Toms	D. Eisinger



ANNUAL DONORS CONTINUED

Dalad Srisuppak
Daphney Cetoute
Darren Evans
Dawna Owens
Dayjeh Graham
Deakeidra Weston
Debora Desir
Deborah Stewart
Deborah Wilcox
Debra Haythorn
Debra Robinson
Debra Wilson
Dennis & Peggy Knabb
Desiree Realistically
Destiny Wilson
Diana Alvarez
Diana Boggiano
Dolores Korf
Donmarie Wilson
Dr. Lori Lane
Dynesha Wade
Dyonia Edouard
Earl and Stephanie Bennett
Eduardo T Alvarez
Edwin Coleman
Elaine Joachin
Elda Becerra
Elisabeth Arriero-Ferreira
Elisabeth Coleman
Elissa Sharone
Elizabeth A Sloyer
Elizabeth Edouard
Elizabeth Marisca
Elizabeth Webb
Emelie Roman
Emily Blaylock
Emily Segal
Erica Taylor
Erik Lembke
Evangelina Binet
Fabienne Cauvin
Fabiola Dorcent
Farah Augustin
Fashara Hill
Fatima Bachemin
Forrest Lansky
Frero Joseph

Gary Klein
Genese Saint-Hilaire
Gloria Canales
Gloria Florexil
Graciela Raggiani
Greg Richter
Gregory A Clay
Gregory Demetriades
Gwenette Latham
Hazel McDuffie
Heather DeStefano
Hector Diaz
Howard Fox
Idalia Lara
Iliana Machado
Illianna Gibbons
India Anderson
India Edwards
Jackie Brooks
Jacondria Woodson
Jacqueline Esparza
Jae Bryan
Jaime & John Elder
Jaime-Lee Bradshaw
James Harryton
Janna Zaidspiner
Jasmine Perard
Jasmine Walker
Jason Stewart
Jean Brutus
Jean Wihbey Ph.D.
Jeannette Corbett
Jeffrey Albert
Jeffrey Collins
Jennifer Roman
Jennifer Martinez
Jenny Blanco
Jerry Kelly
Jessica Guilbert
Jessy Paredes
Jesus Adaniel
Jewell Hansel
Jim Cook
Jamesia Flower
Joanne Bozzuto
Joanne Thompson
Jocelyn Alce

Joe Scodotto
Joel McDowell
John Arslanian
John Butrim
John Corbett
John O'Hara
John Patane
John Vrooman
Jonathan Burstein
Jose Castillo
Judith Fertl
Julia Wright
Julie Khanna
Julie Kime
Junior Joseph
Kari Bouldin
Karin Holden-Alfaro
Karla Gottlieb
Katherine Gil
Katherine Roberts
Kathryn Tancig
Kathy Burstein
Kathy Wall
Katurah Jones
Kayia Poole
Kayla Nalls
Kcasandra Murguia
Kelly Powell
Kendall Bierer
Kenyon Link
Keona Evans
Kerry Sullivan-Jones
Kevin Jones
Kevin Lawson
Kim Demesmin
Jennifer Craft
Kimberly Bullard
Kizie Dunca
Kristi Fioravanti
Kristi Fioravanti
Kristi Slater
Kristoffer Doura
Krystal Johnson
Kya Fuller
Kymeisha Brewster
Lakisha Henderson
Larisha Carswell
Latoya Johnson

Laura Barry
Leatrianna Gaskin
Leiandra Farrell
Lesley Bartick
Libby Casares
Lilianna Desiree Gallipoli Laya
Lillian Herrington
Lindsey Roston
Lisa Barron
Lisa Strudgeon
Lois Brown
Lorraine Larew
Louis A Holland Jr.
Luban Quiceno
Luisa Lima
Lyn Garrett
Lynda Charles
M. Heilman
Maday Tile
Maggie Portela
Manoucheka Leger
Maquissia Garcon
Marc Dominique
Marcie Monroe
Marcus Alcid
Margie Norton
Marianne Hall Martinez
Maricel Cumerma
Marie Michel
Marie Pierre
Mark Montgomery
Mate Batista
MD Massler
Meredith Elrich
Michael DiBartolo
Michael Kuohn
Michael Lader
Michelle Bello
Miles & Kylie Marsala
Milinda Dorsainvil
Pierre Charles
Millie Rodriguez
Mira Zhivkova
Mislene Anelson
Monica Puerto
Montre Bennett
Nancy Bourne

Nancy Diaz
Nancy Z Nelson
Natalie Joseph
Natalie O'Hara
Nerlande Adolphe
Nicole Frederick
Nicole Monteiro
Nina & Barry Solomon
Odessa Brown
Olivia Pierre
Oriana De Leon
Pamela Graden
Patricia Bremekamp
Patricia Wallace
Penny Payne
Phillondria Drummer
R & B Vogel
Racheem Sagay
Ralph Butts
Randa Alami
Raquelle Durrant
Ray Strudgeon
Rebecca Hargreaves
Rebecca Matte
Rebecca Wisnicki
Renee Constantino
Reyna Ochoa
Rhonda Hartke
Ricky Petty
Rita Klafter
Robert Lahey
Robert Mackintosh
Robin Hansel
Ronneshia Harris
Roody Pierre
Rosalind Murray
S. Sixbery
Sabrina Graham
Salvatore Bonura
Sandra Dauphin
Sandra Montoya
Scott Hansel
Seanna Thompson
Sendie Petit-Friere
Shannon Stilson
Sharonda Crawford
Shatashawa Hunter

Shauna Bynes
Shelley Goodman
Sheree Wolliston
Sheri Middlebrook
Shola Oglenski
Soannys Cuevas
Sonie Backer
Stephen Ondus
Steven & Elizabeth Nielsen
Susan Wilkinson
Susy Diaz-Piesco
Tahaiyah Bell
Taika Semoins
Tameka Hudson
Tanisha Lewis
Tanya Gordon
Tanzaneria Allen
Tarence Gibson
Tarshia Cooper
Teal Chance
Tekeira Poole
Tekisha & Terrell Edwards
Teneicia Burton-Sproul
The Lynotts
Tiffany Jackson
Tina McNutt
Tivona Betz
Toniatt Summerville
Tony Rivera
Tootie Martin
Tori McBrayer
Tranae Adderly
Tynisha Brown
Valerie Walker
Vicki & Scott Tate
Victor Coppola
Waypointe East
Westley Hunt
Whitney Erasmus
Whitney Walker
William Foster
William Ruffin
Wilma Joseph
Wilniquia Blackmon
Yareny Rivera
Zariyah Heath

PARTNERS



United Way of Palm Beach County



**Community Partners
of South Florida**
2001 W. Blue Heron Blvd.
Riviera Beach, FL 33404

<http://www.cpsfl.org>
561.841.3500
info@cpsfl.org